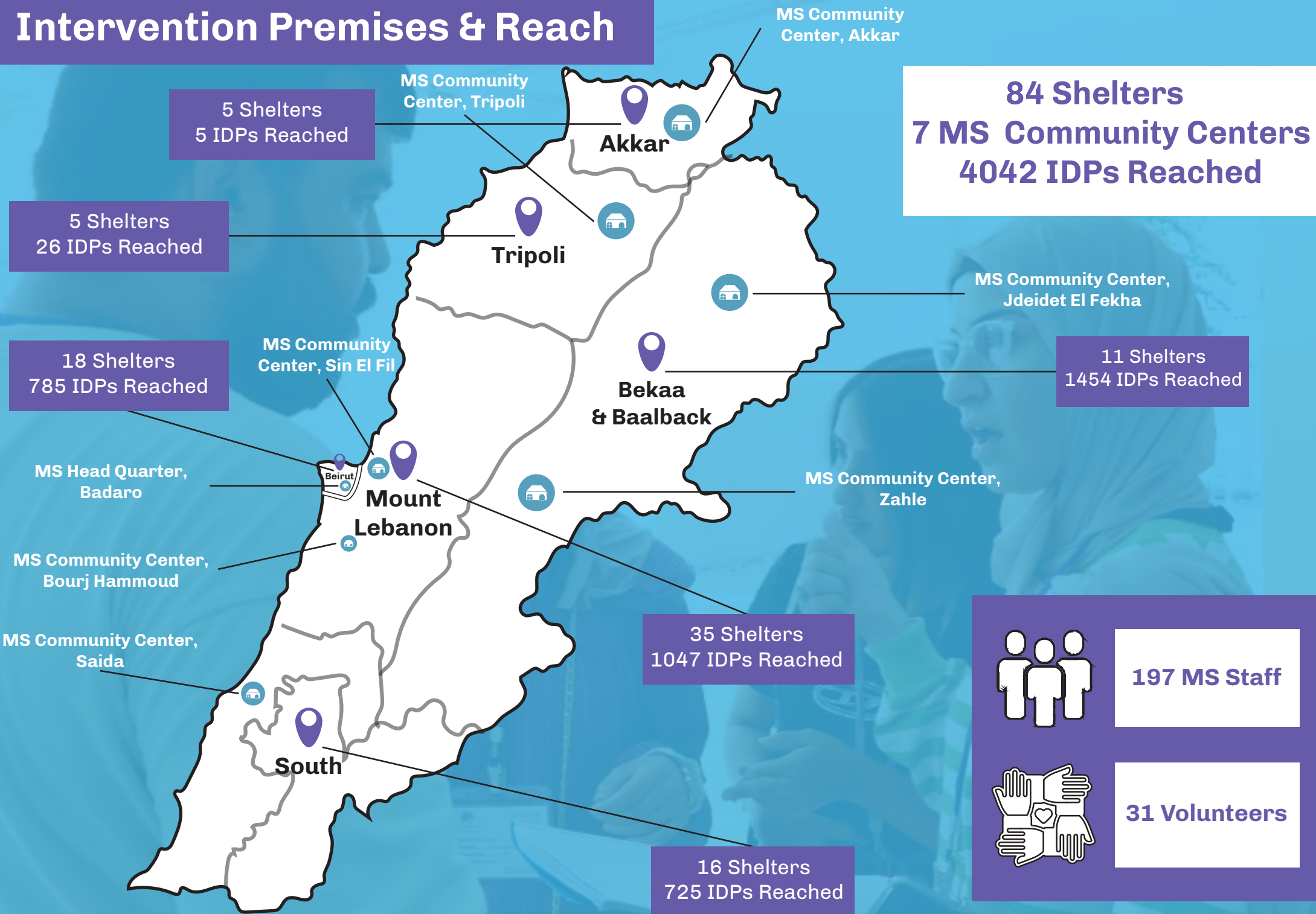




**Mouvement Social In Action
Emergency Response Report
(1 November- 30 November).**

Intervention Premises & Reach



Intervention Components & Activities

Mouvement Social intervened in the shelters during November offering a holistic package of services for displaced children and caregivers. These activities address immediate needs while promoting safety, well-being, and resilience among displaced individuals.



Education

Recreational Activities
for Children

1231

Lego Activities
with Children

1273

LEGO-based, hands-on learning stimulates cognitive and social development, promotes problem-solving and motor skills, and supports the educational needs of children in an accessible and engaging manner. These activities help children cope with the trauma of war and displacement through play and constructive engagement.

Recreational activities offer safe and enjoyable spaces for play. These activities support the psychosocial development of children through play and provide entertainment and enjoyment.

**Education Sector
Total Reached
2504**



Youth & Adolescents

| | |
|-------------------------------|------------|
| Maharati | 75 |
| Adolescents Girls | 34 |
| Sports for Development | 270 |
| Recreational Activities Youth | 53 |

**Youth Sector
Total Reached
432**

MS provides well-equipped **safe spaces** where young people engage in activities such as **football, gymnastics, self-defense...** These spaces not only offer a chance to play and practice but also serve as platforms for discussing age-appropriate topics, including **health, hygiene, social cohesion, peace-making, and team-building.** Through **Maharati sessions,** participants develop essential life skills that support both personal and professional growth. Additionally, **MS supports girls and women in these spaces,** fostering a sense of empowerment and ensuring services are delivered effectively.



Child Protection

CBPSS for Children

453

PFA

305

Awareness sessions with
Children and Caregivers

348

The Child Protection component emphasizes **Community-Based Psychosocial Support (CBPSS)**, creating safe and supportive environments where children can process their experiences, needs and emotions. Activities include **Psychological First Aid** to support children in crisis, **Prevention of Sexual Exploitation and Abuse (PSEA)** sessions to foster safety and awareness, **Light PSS sessions** offering structured group support, and **Recreational activities** like art and theatre to enable creative expression.

**Child Protection Sector
Total Reached
1106**



Social Behavioral Change

This component focuses on addressing the needs of children with disabilities while fostering inclusive environments within shelters and the broader community. **Comprehensive assessments** are conducted to identify individuals with disabilities and determine their specific needs.

Targeted services, such as rehabilitation therapy and the provision of assistive devices, are provided to children with disabilities to support their development, enhance their abilities, and foster community inclusion. **Adults with disabilities are also assessed and referred to other NGOs or service providers based on their unique requirements.**

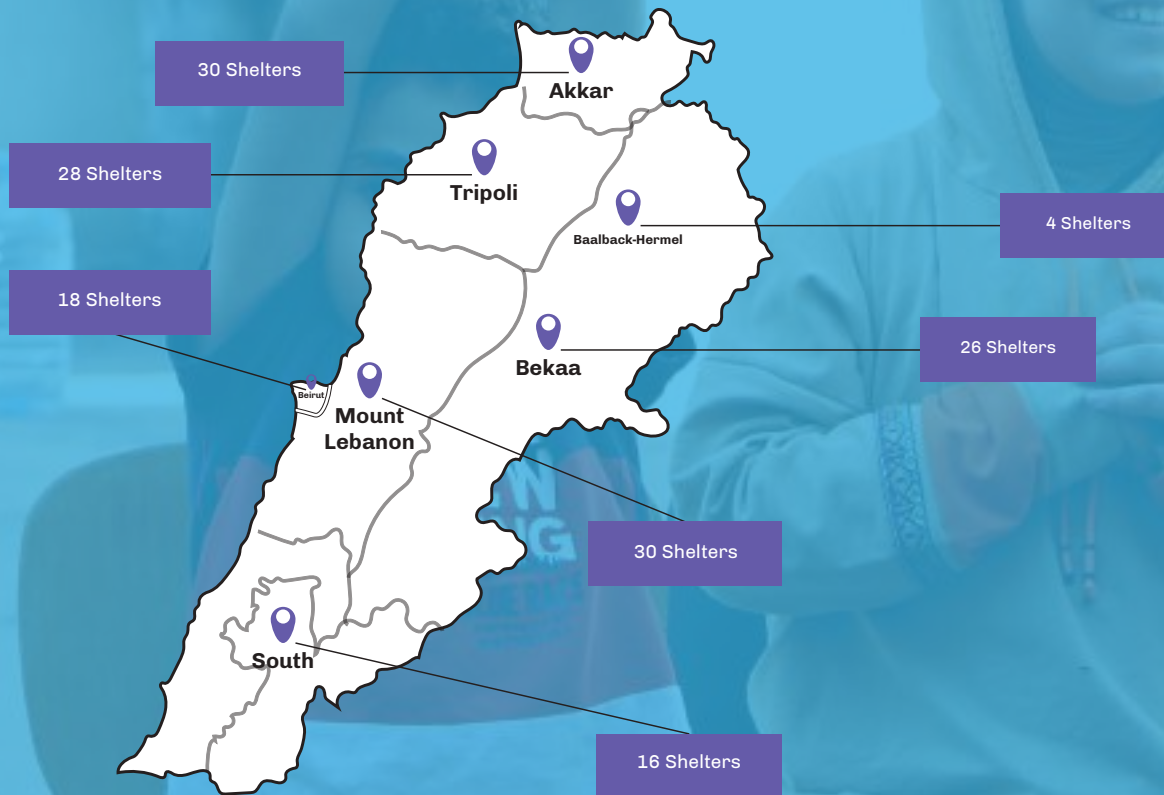
Activities are conducted both in shelters and within community settings. These include **edutainment activities** designed to engage parents and children, fostering inclusion and promoting positive behavioral change. These activities raise awareness about children's rights, clarify inclusive versus exclusive disability-related terminology, and encourage interaction among individuals from diverse backgrounds. Collectively, these initiatives aim to create a more inclusive and supportive environment for all.



Role as National Focal Point for the Social Behavioral Change and Inclusion Component

Intervention Premises & Reach

143 Shelters



MS has been designated as the National Inclusion Focal Point. In this emergency, UNICEF has set up a call center to receive inquiries, including referrals related to Children with Disabilities, which are directed to MS for further action. The SBC Officer, appointed as the Inclusion Focal Point, manages all referrals received from UNICEF. Their role includes organizing and distributing these referrals internally to MS Inclusion and SBC Officers or externally to other inclusion stakeholders, depending on the specific needs.

Social Behavioral Change

SBC Initiatives

67

Number of participants
in the SBC Initiatives

2517

Children provided with
Rehabilitation Therapy &/or
Assistive Devices

269

Children Referred

66

Adults Referred

186

“When a wheelchair was provided for Ali, his daily life changed completely, he gained independence, could move freely, and was able to go out and play with other children. This brought back a part of his childhood.”

- Mother of a beneficiary from
the SBC component.



Drop-In Center



The Drop-In Center in Bourj Hammoud provides vital support to at-risk displaced populations in Beirut, including those living on the streets or in overcrowded homes with limited access to basic needs. Services include nutritious daily meals prepared by 11 women in a collaborative environment that fosters community, belonging, and support, benefiting displaced families and particularly female-headed households. The center also ensures access to hygiene services, such as shower kits, head lice treatments, laundry facilities, and hygiene awareness sessions, while creating a safe space for social cohesion through volunteer-led discussions and referrals for specialized services. Material assistance includes distributing winter clothing, mattresses, and pillows, alongside medical consultations and medications to address urgent health needs. Families also benefit from positive parenting sessions, promoting nurturing environments and improved family dynamics.

Drop-In Center

| | |
|---|------------|
| PFA | 540 |
| PSS For Children | 180 |
| PSS For Caregivers | 90 |
| Case Management | 20 |
| Members utilized the bathing facilities | 322 |
| Members received hygiene Kits | 237 |
| Members utilized the laundry facilities | 145 |
| Provision of Assistive devices | 15 |
| The number of individuals benefiting from daily meals | 371 |



“I am very happy. My sister and I haven't had a shower for 15 days. I'm crying out of happiness.”

- Beneficiary in the Drop-In Center

Legal Follow-Up of Displaced Juveniles in Conflict with the Law

Under this project, Mouvement Social focused on juveniles in conflict with the law, particularly those detained in the detention facilities, displaced during the war for a safer police station, without a warrant or who have been displaced and lack family support or legal representation. These circumstances create a complex situation, necessitating Mouvement Social's intervention to provide legal consultations and court follow-up to expedite case resolutions and facilitate their release. This effort will also contribute to reducing overcrowding in detention facilities and police stations. As part of its approach, Mouvement Social will post bail and cover the associated fees for 75 juveniles.

Individual Legal Consultation for identified juveniles in conflict with the law, particularly those detained.

36

Case Management

10

Follow-Up on cases with regular court visits and communication with court officials.

36

Response Cumulative Efforts

(1 October - 30 November)

Total Population Reached

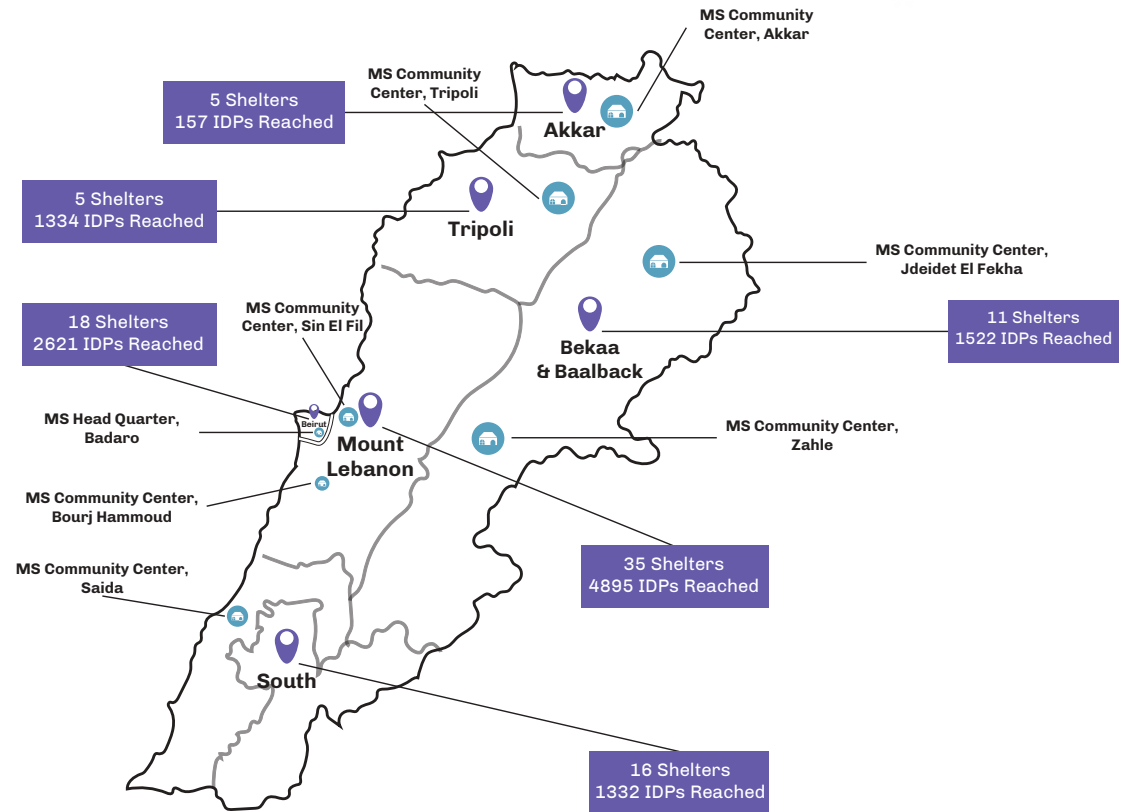
11,825

(Excluding SBC component)

84 Shelters

7 MS Community Centers

(Excluding SBC component)



Empowerment that Moves a Nation